

**dom 6-916v**

Studio Meda, 2017

Sitz geflochten mit dänischer Papierschur 3mm,  
geschlossener Rücken mit Armauflage, Rückenteil und  
Hinterfüsse massiv gebogen

B52, T58 H80 SH46

Studio Meda, 2017

Assise tissée en cordon de papier danois de 3 mm,  
dossier fermé avec accoudoir, pieds massifs courbés et  
arrière

L52, P58 H80 HAss46

Studio Meda, 2017

Seat woven with Danish paper cord 3mm, closed back  
with armrest, solid curved back and back feet

W52, D58 H80 SH46

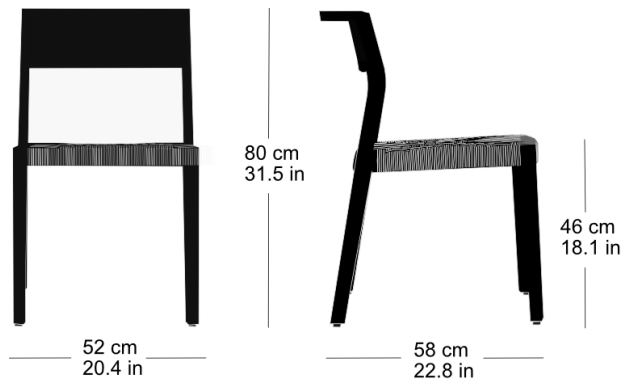
## Varianten / variantes / variants

dom  
6-900dom  
6-900vdom  
6-900adom  
6-906dom  
6-906vdom  
6-906adom  
6-910dom  
6-910vdom  
6-910adom  
6-916dom  
6-916adom  
17-900dom  
17-910dom  
6-815dom  
6-825dom  
11-900dom  
11-906dom  
11-900rdom  
11-906r

**dom 6-916v**

Technische Angaben / specifications / specifications

Masse / mesure / measure

Reihenverbindung /  
accouplement / mating system

ja / oui / yes

Stapelung / empilage / stacking

5 Stühle / chaises / chairs

**dom 6-916v**

## Holzarten / types de bois / types of wood



Buche natur                   HG 520  
Natural beech                HG 520  
Hêtre naturel                HG 520



Buche anthrazit            HG 200  
Anthracite beech         HG 200  
Hêtre anthracite         HG 200



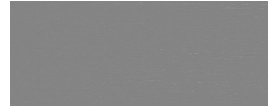
Buche weiss                 HG 330  
White beech                HG 330  
Hêtre blanc                 HG 330



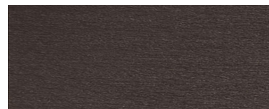
Eiche natur                 HG 530  
Natural oak                 HG 530  
Chêne naturel             HG 530



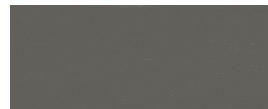
Buche Ebony                HG 100  
Ebony beech                HG 100  
Hêtre teinté ebony        HG 100



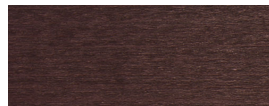
Buche hellgrau            HG 340  
Light grey beech         HG 340  
Hêtre clair gris           HG 340



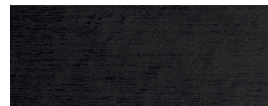
Buche Wenge                HG 110  
Wenge beech               HG 110  
Hêtre teinté wenge        HG 110



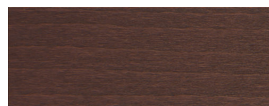
Buche grau                 HG 350  
Grey beech                 HG 350  
Hêtre gris                 HG 350



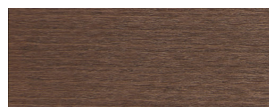
Buche Mahagoni            HG 130  
Mahogany beech         HG 130  
Hêtre teinté mahagoni    HG 130



Buche schwarz             HG 203  
Black beech                HG 203  
Hêtre noir                 HG 203



Buche Maron                HG 120  
Maron beech                HG 120  
Hêtre teinté maron        HG 120



Buche Nuss                 HG 151  
Nut beech                 HG 151  
Hêtre teinté noyer        HG 151



Buche geweisst            HG 172  
Whitewashed beech       HG 172  
Hêtre teinté blanc        HG 172

## Belag / revêtement / surface