

**dom 6-900v**

Studio Meda, 2017

Sitz Formsperrholz, offener Rücken, Rückenteil mit  
Armauflage, Sprossen und Hinterfüsse massiv gebogen,  
stapelbar

B52, T58, H80, SH46

Studio Meda, 2017

Assise en contreplaqué moulé, dossier ouvert, partie  
arrière avec accoudoir, échelons solides courbés et pieds  
arrière, empilable.

L52, P58, H80, HAss46

Studio Meda, 2017

Moulded plywood seat, open back, back section with  
armrest, solid curved rungs and rear feet, stackable.

W52, D58, H80, SH46

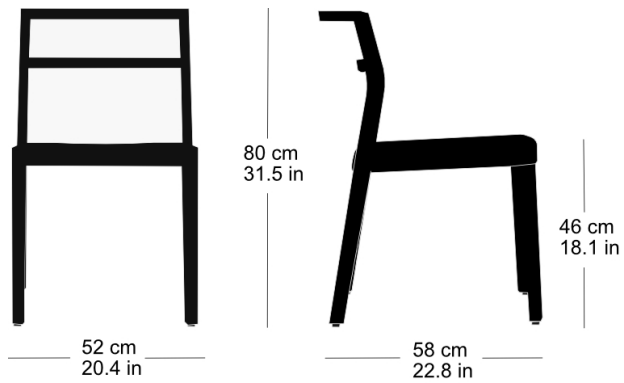
## Varianten / variantes / variants

dom  
6-900dom  
6-900adom  
6-906dom  
6-906vdom  
6-906adom  
6-910dom  
6-910vdom  
6-910adom  
6-916dom  
6-916vdom  
6-916adom  
17-900dom  
17-910dom  
6-815dom  
6-825dom  
11-900dom  
11-906dom  
11-900rdom  
11-906r

**dom 6-900v**

## Technische Angaben / specifications / specifications

## Masse / mesure / measure



Gewicht / ponds / weight 5 kg 10.0 lb

Reihenverbindung /  
accouplement / mating system ja / oui / yes

Stapelung / empilage / stacking 5 Stühle / chaises / chairs

**dom 6-900v**

## Holzarten / types de bois / types of wood



Natural beech           HG 520  
Buche natur            HG 520  
Hêtre naturel           HG 520



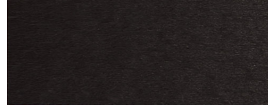
Anthracite beech       HG 200  
Buche anthrazit       HG 200  
Hêtre anthracite       HG 200



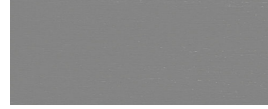
White beech            HG 330  
Buche weiss            HG 330  
Hêtre blanc             HG 330



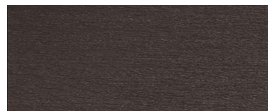
Natural oak             HG 530  
Eiche natur             HG 530  
Chêne naturel          HG 530



Ebony beech            HG 100  
Buche Ebony            HG 100  
Hêtre teinté ebony     HG 100



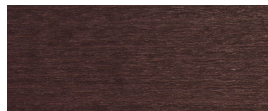
Light grey beech       HG 340  
Buche hellgrau        HG 340  
Hêtre clair gris        HG 340



Wenge beech            HG 110  
Buche Wenge            HG 110  
Hêtre teinté wenge     HG 110



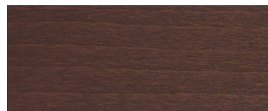
Grey beech             HG 350  
Buche grau             HG 350  
Hêtre gris              HG 350



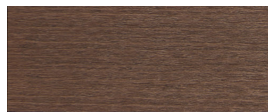
Mahogany beech        HG 130  
Buche Mahagoni        HG 130  
Hêtre teinté mahagoni   HG 130



Black beech             HG 203  
Buche schwarz          HG 203  
Hêtre noir              HG 203



Maron beech            HG 120  
Buche Maron            HG 120  
Hêtre teinté maron     HG 120



Nut beech              HG 151  
Buche Nuss             HG 151  
Hêtre teinté noyer     HG 151



Whitewashed beech    HG 172  
Buche geweisst        HG 172  
Hêtre teinté blanc     HG 172

## Belag / revêtement / surface