

select 1-370

Werner Max Moser, 1934

Sitz Formsperrholz, Rücken, Füsse und Sitzzarge massiv gebogen

B49, T49, H77, SH 46

Werner Max Moser, 1934

Assise en multiplis, dossier, pieds et cadre du siège en bois massif cintré

L49, P49, H77, HAss46

Werner Max Moser, 1934

Moulded plywood seat, back, legs and seat frame solid bentwood

W49, D49, H77, SH 46

Varianten / variantes / variants



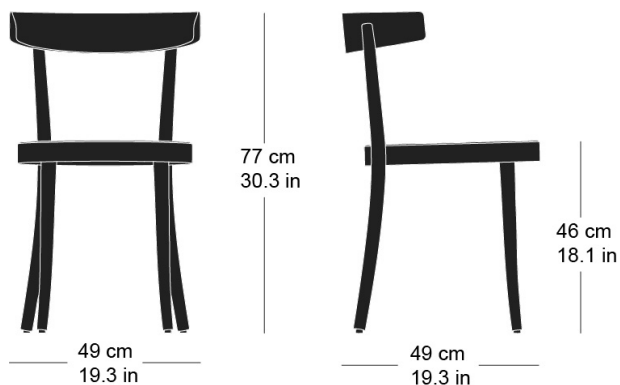
select
1-373



select
1-376

Technische Angaben / specifications / specifications

Masse / mesure / measure



Gewicht / ponds / weight

4.2 kg 8.4 lb

select 1-370

Holzarten / types de bois / types of wood



Natural beech HG 520
Buche natur HG 520
Hêtre naturel HG 520



Anthracite beech HG 200
Buche anthrazit HG 200
Hêtre anthracite HG 200



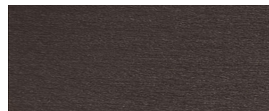
White beech HG 330
Buche weiss HG 330
Hêtre blanc HG 330



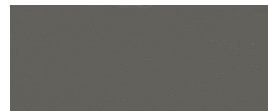
Ebony beech HG 100
Buche Ebony HG 100
Hêtre teinté ebony HG 100



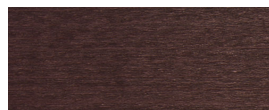
Light grey beech HG 340
Buche hellgrau HG 340
Hêtre clair gris HG 340



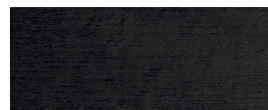
Wenge beech HG 110
Buche Wenge HG 110
Hêtre teinté wenge HG 110



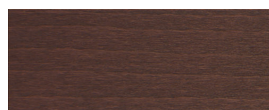
Grey beech HG 350
Buche grau HG 350
Hêtre gris HG 350



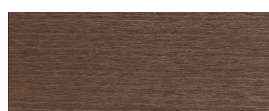
Mahogany beech HG 130
Buche Mahagoni HG 130
Hêtre teinté mahagoni HG 130



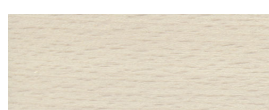
Black beech HG 203
Buche schwarz HG 203
Hêtre noir HG 203



Maron beech HG 120
Buche Maron HG 120
Hêtre teinté maron HG 120



Nut beech HG 151
Buche Nuss HG 151
Hêtre teinté noyer HG 151



Whitewashed beech HG 172
Buche geweisst HG 172
Hêtre teinté blanc HG 172

Belag / revêtement / surface