

dom 6-906v

Studio Meda, 2017

Sitz geflochten mit dänischer Papierschur 3mm, offener Rücken, mit Armauflage, Sprossen und Hinterfüsse massiv gebogen

H52, T58, H80, SH46

Studio Meda, 2017

Assise tissée en cordon de papier danois de 3 mm, dossier ouvert, avec accoudoir, échelons et pieds arrière massifs pliés.

L52, P58, H80, HAss46

Studio Meda, 2017

seat woven with Danish paper cord 3mm, open back, with armrest, rungs and back feet solid bentwood

W52, D58, H80, SH46

Varianten / variantes / variants



dom
6-900



dom
6-900v



dom
6-900a



dom
6-906



dom
6-906a



dom
6-910



dom
6-910v



dom
6-910a



dom
6-916



dom
6-916v



dom
6-916a



dom
17-900



dom
17-910



dom
6-815



dom
6-825



dom
11-900



dom
11-906



dom
11-900r

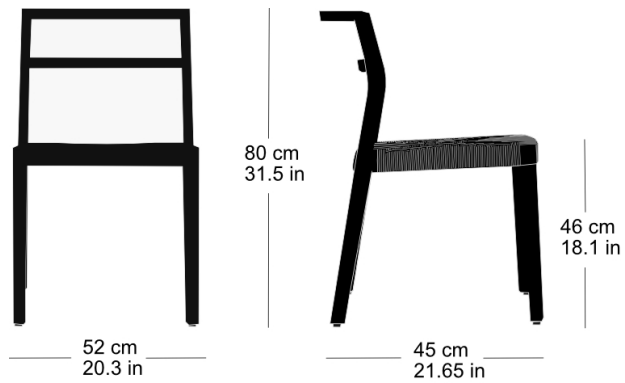


dom
11-906r

dom 6-906v

Technische Angaben / specifications / specifications

Masse / mesure / measure



Gewicht / ponds / weight 6.5 kg 13.0 lb

Stapelung / empilage / stacking 5 Stühle / chaises / chairs

dom 6-906v

Holzarten / types de bois / types of wood



Hêtre naturel HG 520
Buche natur HG 520
Natural beech HG 520



Hêtre anthracite HG 200
Buche anthrazit HG 200
Anthracite beech HG 200



Hêtre blanc HG 330
Buche weiss HG 330
White beech HG 330



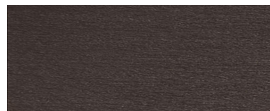
Chêne naturel HG 530
Eiche natur HG 530
Natural oak HG 530



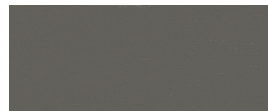
Hêtre teinté ebony HG 100
Buche Ebony HG 100
Ebony beech HG 100



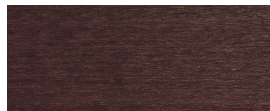
Hêtre clair gris HG 340
Buche hellgrau HG 340
Light grey beech HG 340



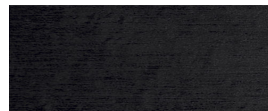
Hêtre teinté wenge HG 110
Buche Wenge HG 110
Wenge beech HG 110



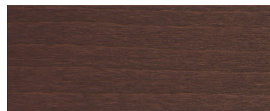
Hêtre gris HG 350
Buche grau HG 350
Grey beech HG 350



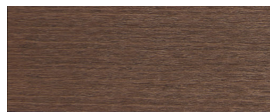
Hêtre teinté mahagoni HG 130
Buche Mahagoni HG 130
Mahogany beech HG 130



Hêtre noir HG 203
Buche schwarz HG 203
Black beech HG 203



Hêtre teinté maron HG 120
Buche Maron HG 120
Maron beech HG 120



Hêtre teinté noyer HG 151
Buche Nuss HG 151
Nut beech HG 151



Hêtre teinté blanc HG 172
Buche geweisst HG 172
Whitewashed beech HG 172

Belag / revêtement / surface