

**dom 6-900a**

Studio Meda, 2017

Armlehnstuhl, Sitz Formsperrholz, offener Rücken,  
Sprossen und Hinterfüsse massiv gebogen  
B54, T55, H80, SH46

Studio Meda, 2017

Fauteuil, assise en contreplaqué moulé, dossier ouvert,  
échelons et pieds du dossier en bois massif cintré  
L54, P55, H80, HAss46

Studio Meda, 2017

Armchair, seat moulded plywood, open back, rungs and  
back feet solid curved  
W54, D55, H80, SH46

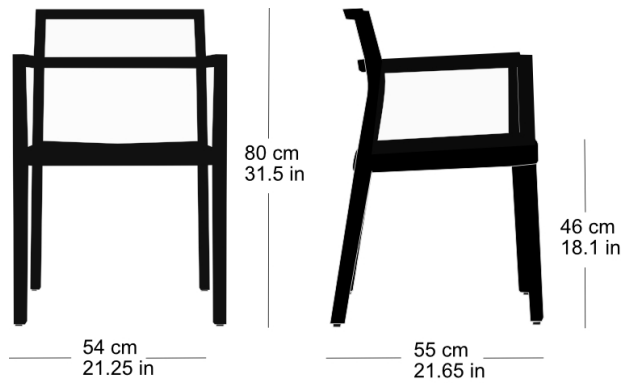
## Varianten / variantes / variants

dom  
6-900dom  
6-900vdom  
6-906dom  
6-906vdom  
6-906adom  
6-910dom  
6-910vdom  
6-910adom  
6-916dom  
6-916vdom  
6-916adom  
17-900dom  
17-910dom  
6-815dom  
6-825dom  
11-900dom  
11-906dom  
11-900rdom  
11-906r

**dom 6-900a**

## Technische Angaben / specifications / specifications

## Masse / mesure / measure



Gewicht / ponds / weight 6.5 kg 13.0 lb

Reihenverbindung /  
accouplement / mating system ja / oui / yes

Stapelung / empilage / stacking 5 Stühle / chaises / chairs

**dom 6-900a**

## Holzarten / types de bois / types of wood



Hêtre naturel            HG 520  
Buche natur            HG 520  
Natural beech            HG 520



Hêtre anthracite        HG 200  
Buche anthrazit        HG 200  
Anthracite beech        HG 200



Hêtre blanc              HG 330  
Buche weiss            HG 330  
White beech             HG 330



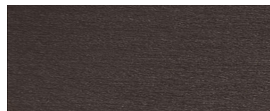
Chêne naturel         HG 530  
Eiche natur            HG 530  
Natural oak            HG 530



Hêtre teinté ebony     HG 100  
Buche Ebony            HG 100  
Ebony beech            HG 100



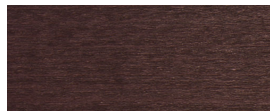
Hêtre clair gris        HG 340  
Buche hellgrau        HG 340  
Light grey beech        HG 340



Hêtre teinté wenge     HG 110  
Buche Wenge            HG 110  
Wenge beech            HG 110



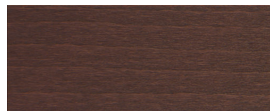
Hêtre gris              HG 350  
Buche grau             HG 350  
Grey beech              HG 350



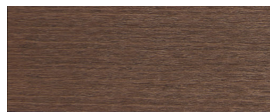
Hêtre teinté mahagoni    HG 130  
Buche Mahagoni        HG 130  
Mahogany beech        HG 130



Hêtre noir              HG 203  
Buche schwarz         HG 203  
Black beech             HG 203



Hêtre teinté maron      HG 120  
Buche Maron            HG 120  
Maron beech            HG 120



Hêtre teinté noyer        HG 151  
Buche Nuss              HG 151  
Nut beech                HG 151



Hêtre teinté blanc        HG 172  
Buche geweisst        HG 172  
Whitewashed beech     HG 172

## Belag / revêtement / surface