

**status 6-415a**

Hannes Wettstein, 1999

Sitz gepolstert, Rücken Formsperrholz, Polster vorne aufgesetzt, Hinterfüsse massiv gebogen, stapelbar, Reihenverbindung möglich  
B56, T51, H82, SH47, ALH66.5

Hannes Wettstein, 1999

Assise rembourrée, devant du dossier rembourré et arrière en contreplaqué moulé, pieds arrière en bois massif cintré, empilable, système d'accouplement en option  
L56, P51, H82, HAss47, HAcc66.5

Hannes Wettstein, 1999

Upholstered seat, moulded plywood back, upholstered on the front, rear legs solid bentwood, stackable, optional row connector  
W56, D51, H82, SH47, ALH66.5

## Varianten / variantes / variants



status  
6-410



status  
6-410a



status  
6-413



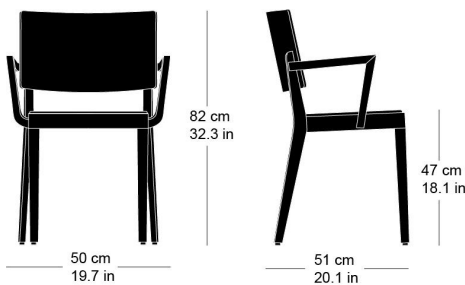
status  
6-413a



status  
6-415

## Technische Angaben / specifications / specifications

## Masse / mesure / measure



Gewicht / poids / weight 6.9 kg 13.8 lb

Polsterung / rembourrage / upholstery ja / oui / yes

Reihenverbindung / accouplement / mating system ja / oui / yes

Stapelung / empilage / stacking 4 Stühle / chaises / chairs

**status 6-415a**

## Holzarten / types de bois / types of wood



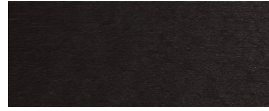
Hêtre naturel           HG 520  
Buche natur            HG 520  
Natural beech           HG 520



Hêtre anthracite       HG 200  
Buche anthrazit       HG 200  
Anthracite beech       HG 200



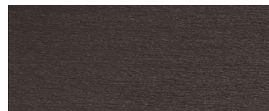
Hêtre blanc             HG 330  
Buche weiss            HG 330  
White beech             HG 330



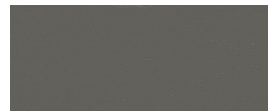
Hêtre teinté ebony     HG 100  
Buche Ebony            HG 100  
Ebony beech             HG 100



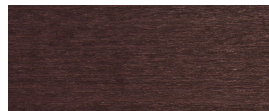
Hêtre clair gris        HG 340  
Buche hellgrau         HG 340  
Light grey beech       HG 340



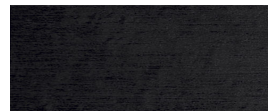
Hêtre teinté wenge     HG 110  
Buche Wenge            HG 110  
Wenge beech            HG 110



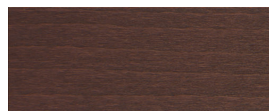
Hêtre gris               HG 350  
Buche grau             HG 350  
Grey beech              HG 350



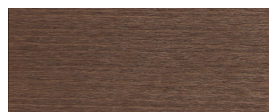
Hêtre teinté mahagoni   HG 130  
Buche Mahagoni        HG 130  
Mahogany beech        HG 130



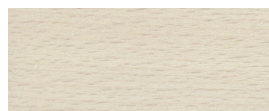
Hêtre noir               HG 203  
Buche schwarz         HG 203  
Black beech             HG 203



Hêtre teinté maron      HG 120  
Buche Maron            HG 120  
Maron beech             HG 120



Hêtre teinté noyer      HG 151  
Buche Nuss             HG 151  
Nut beech                HG 151



Hêtre teinté blanc       HG 172  
Buche geweisst        HG 172  
Whitewashed beech     HG 172

## Belag / revêtement / surface